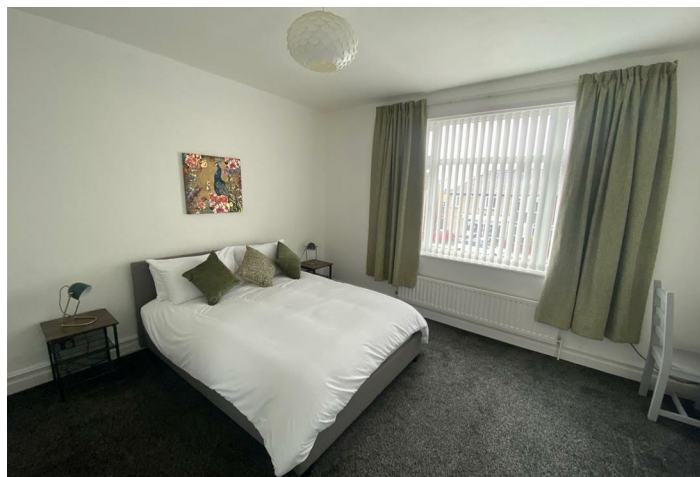
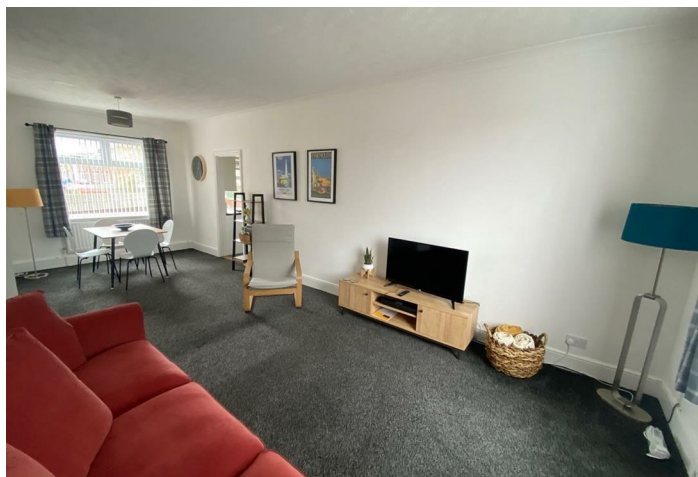




1 Queens Road , Seaton Sluice NE26 4DS

- Detached First Floor Apartment
- Bed Linen & Towels Provided
 - Pets Welcome
 - Short Term Let
 - No Smokers
- Maximum 5 Guests
- Off Street Parking
- Coastal Location
- Front & side garden
- WIFI

£525 Per Week





Sandpiper is a detached first floor apartment in the quiet fishing village of Seaton Sluice. The apartment is a 5 minute walk from the beach, harbour and Holywell dene.

The property is a short walk away from the local Co-op, Boots chemist, pubs all serving food and a popular fish and chip shop Harbour View.

THE SPACE

The detached first floor apartment has some sea views from the front windows and provides outside space. The living room has is light and airy and consists of a dining area.



The kitchen is equipped with a oven, microwave, fridge freezer, kettle, toaster, washing machine and tumble dryer.

The master bedroom has a king size bed, built in wardrobes and a dressing table.

The second bedroom has a double bed with a single bunk above and a built in wardrobe.

Bathroom is equipped with a bath with shower over.



Externally there is a private garden with outside storage for bikes etc, brick built BBQ area and on street parking.

This is for short let only.

Daily rate £ 75 (minimum 3 nights)

Weekly rate £525

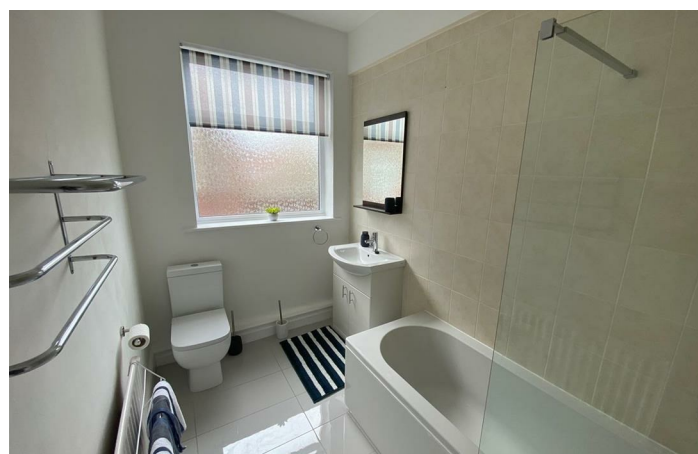
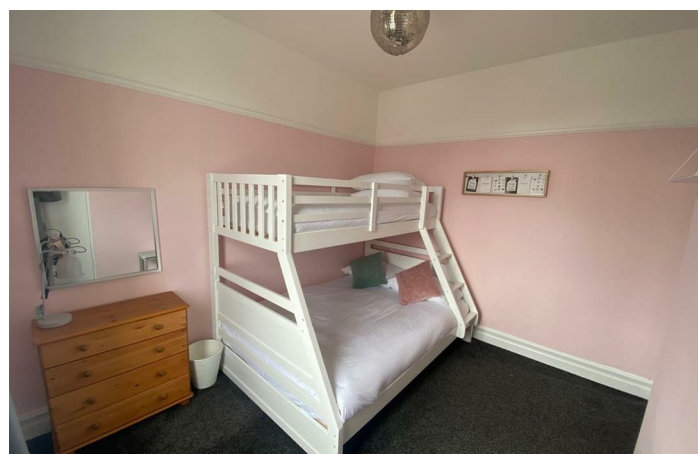
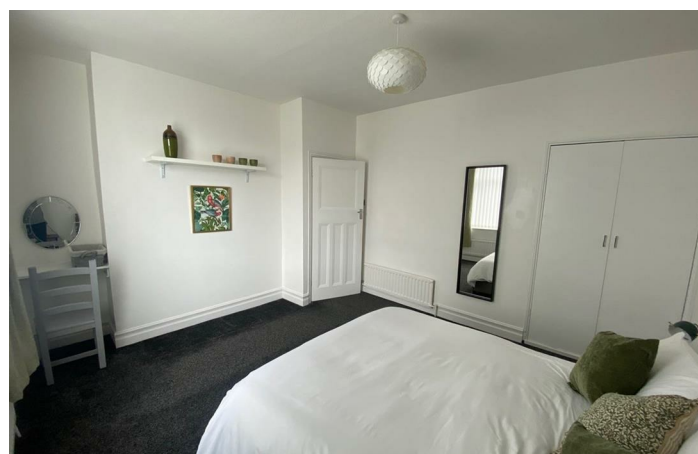
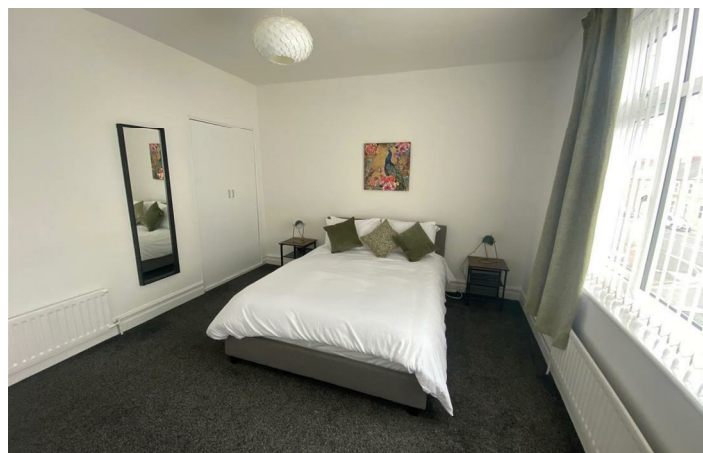
Monthly rate £1850

NOT AVAILABLE FOR ANY PARTIES

This is ideal for
PEOPLE VISITING THE AREA
CONTRACTORS TRAVELING FOR WORK



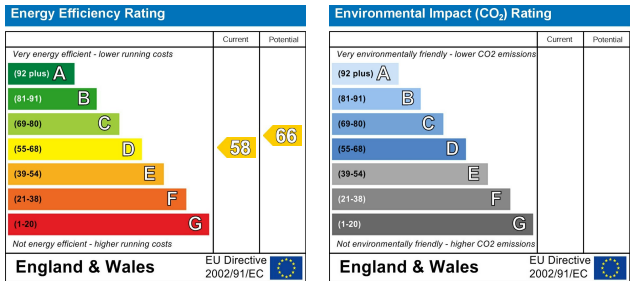
STAY DURING HOUSE MOVE
STAY DURING HOUSE RENOVATION







Local Authority Northumberland County Council
Council Tax Band Exempt
EPC Rating D
Tenure



ML Estates Lettings Office
27 Avenue Road, Seaton Delaval, Tyne
And Wear, NE25 0DT

Contact
0191 237 60 60
lettings@mlestates.co.uk
www.mlestates.co.uk

Agents Note: Whilst every care has been taken to prepare these particulars, they are for guidance purposes only. All measurements are approximate and for general guidance purposes only and whilst every care has been taken to ensure accuracy, they should not be relied upon and potential buyers/tenants are advised to recheck the measurements.